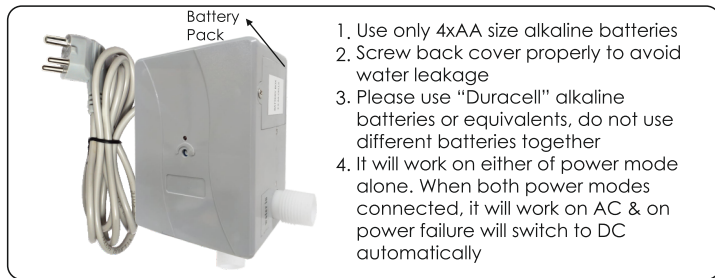
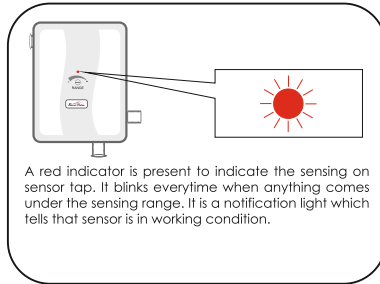


## CONNECTION DIAGRAM OF CONTROL UNIT :-



1. Use only 4xAA size alkaline batteries
2. Screw back cover properly to avoid water leakage
3. Please use "Duracell" alkaline batteries or equivalents, do not use different batteries together
4. It will work on either of power mode alone. When both power modes connected, it will work on AC & on power failure will switch to DC automatically

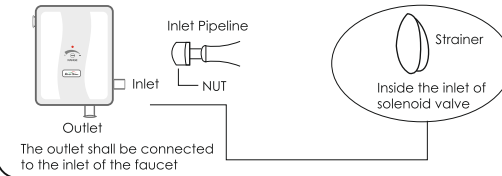
## LIGHT NOTIFICATION



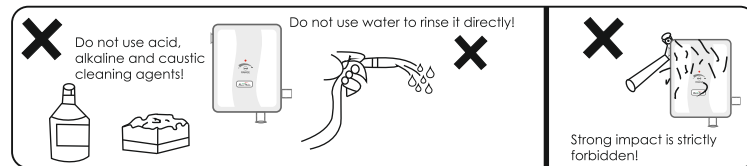
A red indicator is present to indicate the sensing on sensor tap. It blinks everytime when anything comes under the sensing range. It is a notification light which tells that sensor is in working condition.

## HOW TO CLEAN THE STRAINER

The strainer may be clogged when the sensor is initially used or when the sensed flushing amount is reduced, please clean it promptly. Do remember to turn off the water supply before cleaning the strainer.



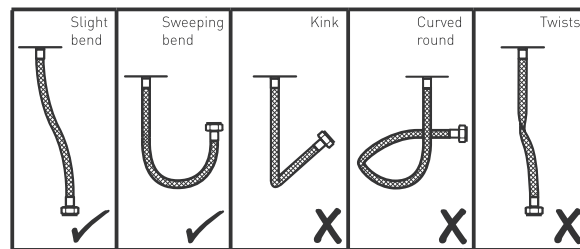
## ROUTINE CARE AND MAINTENANCE



## Flexible Connecting Hose

Care must be taken when connecting the flexible connection hose from the power supply box to the spout to ensure it does not bend sharply and kink or twist.

See below for recommended ways to fit the flexible connecting hose.



**Important:** Failure to follow these guidelines may result in poor performance and damage to the flexible connection hose.



## AUTOMATIC SENSOR FAUCET



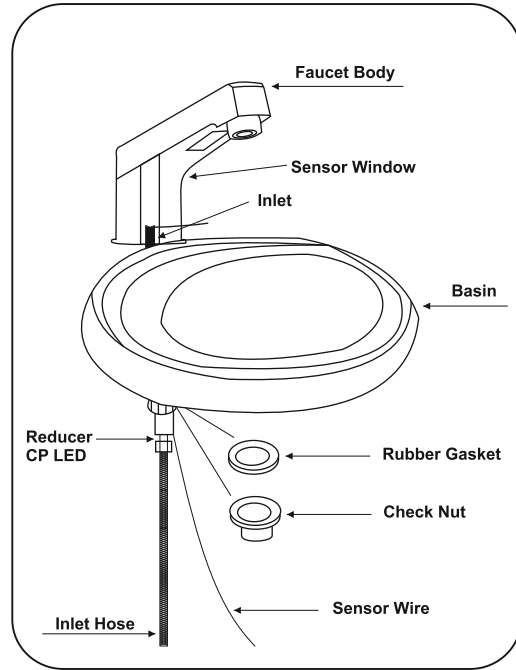
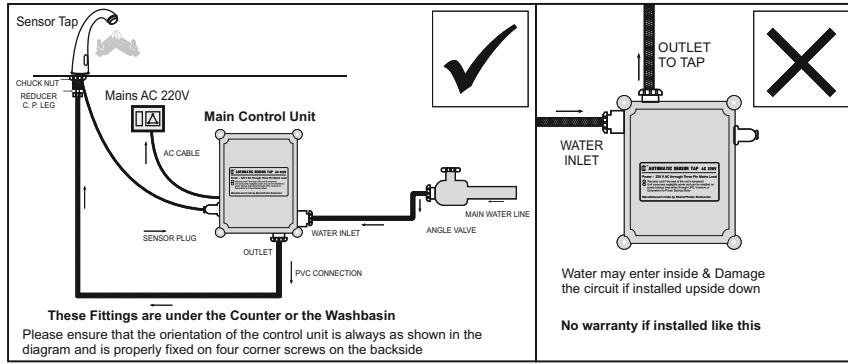
## INSTALLATION & OPERATION MANUAL

1. Designed and manufactured in India to automatically wash hands without the need to touch the tap.
2. An essential & dependable component in every washroom to maintain proper hygiene.
3. Simultaneously instrumental to help reduce water wastage.
4. Prevents the spread of germs due to physical contact of tap.
5. Ensures no one leaves the tap running after use as water flows only for the duration when hand is in front of the sensor.
6. A tried and tested easily serviceable & lifetime repairable robust Indian answer to use & throw 'locally branded imported models' marketed widely in India.
7. A true Indian product that confirms to Green Building Standards.
8. Reduces carbon footprint & saves considerable amount of operational costs as compared to manual taps.

## SPECIFICATIONS :-

MODEL	BP-F057
POWER	6V DC/ 220V AC
SENSING RANGE	150mm Adjustable
WATER PRESSURE	0.02 MPa - 0.8 Mpa *0.05 Mpa is minimum required pressure for decent flow of water
INLET	G1/2" (Dn15)
SETTINGS	Sensing range adjustment pot given at control unit ▶ By default range is preset at optimum value ▶ Alter setting only if necessary

## INSTALLATION DIAGRAM :-



### IN-BOX CONTENTS

- ▶ Sensor faucet
- ▶ Control unit

### INSTALLATION KIT

- ▶ Screws & plastic bush
- ▶ Control box outlet adapter
- ▶ Rubber washer

## Automatic Sensor Faucet Troubleshoot Flowchart

